

## REPORT TO HEALTH AND WELLBEING BOARD

1.	<b>Meeting:</b>	<b>Health and Wellbeing Board</b>
2.	<b>Date:</b>	<b>18<sup>th</sup> January 2012</b>
3.	<b>Title:</b>	<b>Children and Young People's Plan 2010-2013 Progress Report</b>
4.	<b>Directorate:</b>	<b>RMBC – Children and Young People's Services</b>

### 5. Summary

In July 2010 The Children's Trust Board published a new Children and Young People's Plan (CYPP); this sets the strategic priorities for the work of partners on the Children's Trust Board and provides the framework for commissioning decisions.

The Children and Young People's Board has also chosen nine areas of focus for priority action. Six action plans were published to accompany the Children and Young People's Plan. The Children and Young People's Trust Board has recently reviewed these action plans and they will be disestablished in the light of changed statutory requirements and the need for more streamlined working practice across the children and young people's partnership.

This report provides a progress update on activities identified in the CYPP and advises the Board of how activity will be managed in the future.

### 6. Recommendations

The Health and Wellbeing Board is asked to:

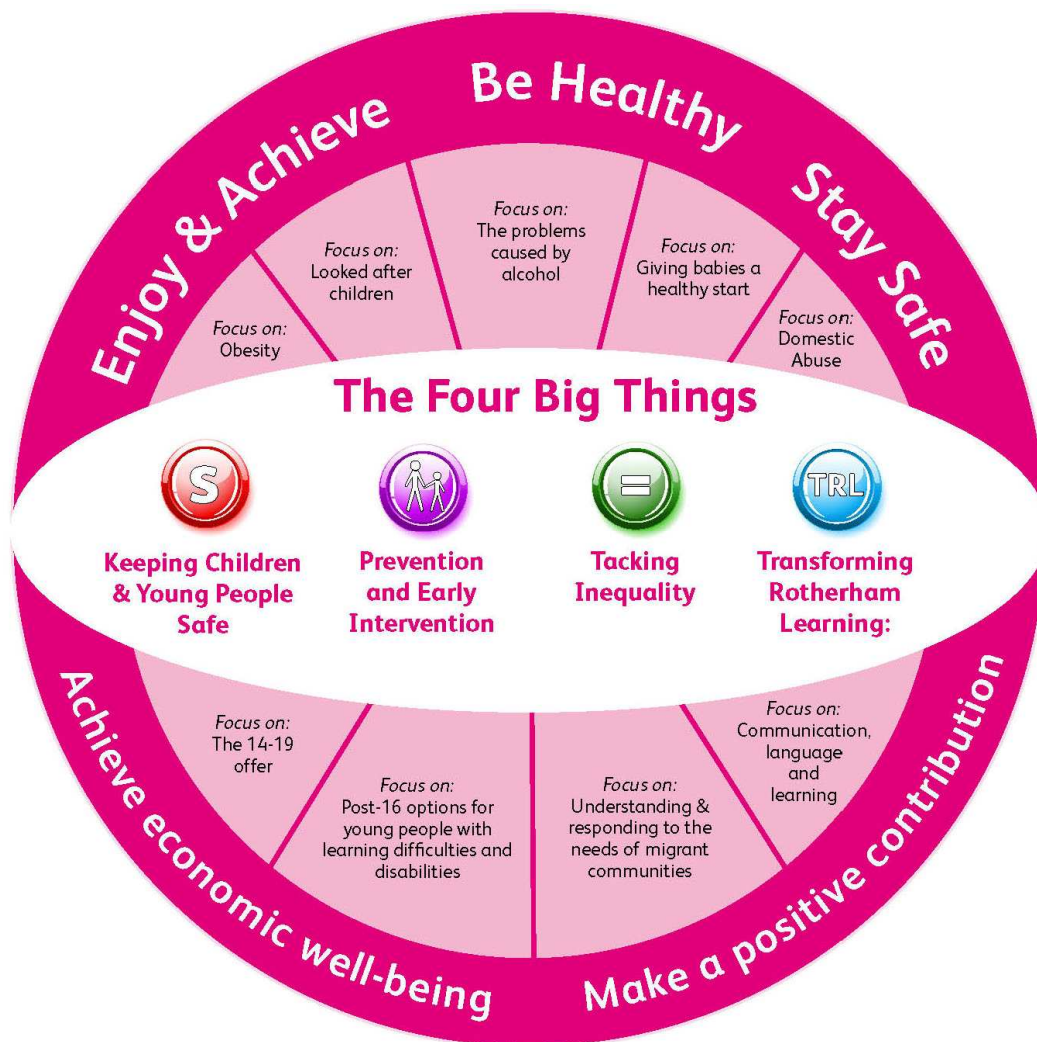
- Note the progress made against the key areas of focus identified in the Children and Young People's Plan;
- Ensure that the Health and Wellbeing Strategy is aligned with the Children and Young People's Plan;
- Note the governance arrangements, in particular for the areas of focus most closely linked to the health and wellbeing agenda: giving babies the best start in life, obesity and alcohol.

## 7. Proposals and Details

### Background

The statutory requirement for a Children's Trust Board and a Children and Young People's Plan has been revoked by the coalition government. However, in Rotherham, the Children's Trust Board remains committed to providing a strong leadership role for integrated children's services, and has concluded that the Children and Young People's Plan provides an invaluable planning framework to guide strategic and operational decision-making across the partnership. The Children and Young People's Plan also provides the framework for commissioning decisions.

The CYPP identifies 'four big things' that will be central to business of the Children and Young People's Partnership; these are 'keeping children and young people safe' 'prevention and early intervention', 'tackling inequalities' and 'transforming Rotherham learning'.



## **Areas of Focus**

Seven areas of focus were identified in the CYPP 2010-2103. The purpose of this focus is to draw attention to areas which were felt to need additional forensic attention, significant investment or change management in order to alter the direction of travel or significantly accelerate along a chosen path.

### **(i) Areas of Focus and the CYPTB Commissioning Plan**

The CYPTB Executive Group undertook further work in June 2011 to identify the priority areas that would most benefit from partnership working by Board members.

The four main priority areas agreed by the group are:

- Children get the best start in life which includes implementing the early prevention agenda and reducing health inequalities including tackling obesity.
- Reducing substance misuse by young people, specifically in relation to alcohol.
- Children and young people affected by domestic abuse are supported and protected.
- To ensure all Rotherham schools are performing well, especially in relation to Key Stage 2.

The CYPTB Commissioning Plan will respond to these identified priority areas. The Commissioning Team have already commenced a needs analysis, a summary of which is provided for this report

### **(a) Giving babies a healthy start / Obesity (children get the best start in life)**

This priority covers a number of key health priorities including infant mortality, reducing health inequalities, obesity and the effective delivery of early help to vulnerable families with young children.

Rates of breastfeeding have improved (both initiation and prevalence at 6-8 weeks) and are now in line with neighbouring boroughs. However rates are still below both Yorkshire and Humber and England averages.

Obesity remains high; 35% of children in Rotherham are classified as overweight or obese. 1 in 4 children in reception and 1 in 3 children in Year 6 are overweight or obese.

Partners involved in work to give babies a healthy start include Rotherham Foundation Trust, NHS Rotherham, GPs and RMBC Children's Centres and other early years providers. Weight management intervention programmes are commissioned through a number of providers including Carnegie Weight Management, DC Leisure and Clifton Medical Proactice. In addition, partners who are delivering prevention and treatment are Rotherham Foundations Trust, NHS Rotherham, GPs, Children's Centres and GPs.

The Prevention & Early Intervention Strategy is currently being refreshed, under direction from the Think Family Board. The new 'Early Help Strategy' will be

launched in April 2012, together with plans to ensure it is operationally deliverable. These plans will include successful programmes of support such as the Family Nurse Partnership.

**(b) The problems caused by alcohol (reducing substance misuse by young people)**

728 children have parents who are receiving structured treatment for drug and alcohol issues, 241 of these children are under 5; 90% of these children are not receiving additional support and work is underway to address this.

In 2010/11 134 young people received structured treatment. However the 2011 Lifestyle Survey indicates that the problem is much larger than this figure would indicate. In 2011 the number of young people drinking 1-10 units per week increased to 70%. 43% of children and young people said that they obtained alcohol from their family.

This work is led by the Safer Rotherham Partnership which has links to the Think Family Board. Partners involved include NHS Rotherham, RDASH, RMBC, South Yorkshire Police and Colleges.

A new screening tool has been developed for use by all partner agencies. It is hoped that this will reduce pressure on specialist agencies. To address the issue of the high numbers of children and young people with substance misusing parents who do not receive additional support a temporary post within Drug and Alcohol Services has been created. The Healthy Schools Programme and South Yorkshire Police both continue to deliver programmes in schools to raise awareness of the problems caused by drugs and alcohol; however, funding for these programmes is under threat.

**(c) Domestic abuse (children & young people affected by domestic abuse are supported and protected)**

Domestic Abuse continues to be a significant feature of referrals to the local authority's children's access and assessment team. Contacts for a 12 month period beginning on 1<sup>st</sup> April 2010 were 1799 children, 665 progressed to referrals or re-referrals for services. Contacts between 1<sup>st</sup> April 2011 and 19<sup>th</sup> October 2011 for new cases concerning domestic abuses was already 1454 children of whom 396 had been referred.

In 2011/12, up until the end of September, 180 cases were referred to IDVA, 144 had been referred to MARAC of which 89 were families with 173 children involved.

The Borough Wide Local Authority Contact and Assessment Team for Children's Services will continue to work with South Yorkshire Police and IDVAs to pilot a triage process for children and young people affected by domestic abuse and these arrangements will be captured in the operational delivery plans for the refreshed Early Help Strategy.

The Safer Rotherham Partnership steers the work of the Rotherham domestic abuse sector through the Domestic Abuse Priority Group. In addition, the Rotherham Local

Safeguarding Children's Board and the Safeguarding Adults Board are aligning their roles to ensure effective scrutiny and challenge of the domestic abuse sector.

#### **(d) Communication, language & learning (schools performing well / KS2)**

The overall performance for Key Stage 2 in 2011 was above the government floor target which is that 60% of pupils should achieve Level 4 or above in both maths and English. The Rotherham performance was 69%, an improvement of 2.5% since 2010.

However, there remain 14 schools who are not reaching the floor target.

The work to improve performance is being led by the Rotherham School Improvement Partnership which is working with the Rotherham Teaching School Alliance to put in place a network of peer support and challenge. This will be funded through the Dedicated Schools Grant.

The Department for Education have validated the Rotherham approach. The School Improvement Partnership will continue to lead for this priority area and provide progress reports to the Children and Young People's Trust Board.

#### **(ii) Areas of Focus not in the CYPTB Commissioning Plan**

The Areas of Focus that fall outside these priorities are looked after children, understanding and responding to the needs of migrant communities, 14-19 and post-16 opportunities for young people with learning difficulties and disabilities.

##### **(a) 14-19**

The CYPTB received a detailed report on this area of focus on 27<sup>th</sup> July 2011. Some of the activities identified in the CYPP are no longer relevant since the statutory requirement to have a 14-19 Plan and a 14-19 Strategy Group have been removed.

Rotherham has in place a Raising Participation Age (RPA) Plan, which has been developed by the RPA Strategy Group. The RPA Strategy group will also be responsible for overseeing its implementation. The group will report to the Economy Board, Health and Well-Being Board and the Children and Young People's Trust Board, via RMBC's CYPS Directorate Leadership Team. The plan will support Rotherham's 11-18 provider network (i.e. Academies, Further Education Colleges, Maintained Schools, Sixth Form College and Work-Based Learning organisations) and other partners in their planning and delivery of education and training to Rotherham's young people.

##### **(b) Looked After Children**

Two of the key objectives identified in the CYPP for this area of focus have been achieved; The Looked After Children's Service (LAC Service) was established in October 2010. The central focus of the team's work is to improve outcomes for children and young person who are looked after by the local authority. The overall welfare of the child, including their welfare in education, will guide all practice. The LAC Service Manager report to the Director of Safeguarding and Corporate

Parenting and is accountable to Rotherham's Corporate Parenting Board. The Corporate Parenting Board has its inaugural meeting in March 2011. The Board is chaired by Cllr Paul Lakin, thus providing a direct link with the CYPTB.

### **(c) Post-16 Opportunities for Young People with Learning Difficulties and Disabilities**

Progress continues to be made for all the key activities identified in the CYPP, however, there remain significant costs associated to out of area provision for young people with LDD. Work is currently underway with partners to explore provision options in the Borough that would meet learning needs, be more cost effective and utilises social care budgets accordingly.

The behaviour collaboratives are established and developing provision with a particular focus on reducing the number of young people who need to be moved out of authority.

The work is overseen by the Rotherham School Improvement Partnership.

### **(d) Understanding and responding to the needs of migrant communities**

A Strategic Lead has been appointed for Early Intervention and New Arrivals; this appointment will ensure that CYPS is able to contribute to (and in some cases lead) the work of the Local Strategic Partnership to respond to the needs of the Roma community.

### **Action Plans**

It has been proposed that the aspirations identified in each of the six action plans are formally assigned to sub-groups of the Children and Young People's Trust Board and other partnership structures including the Think Family Board and the Rotherham Local Safeguarding Children Board. Work is currently underway to ensure that governance arrangements are clarified and simplified. The Children and Young People's Trust Board has requested a further report in February 2012.

## **8. Finance**

The CYPP 2010-2013 and any associated documents must provide clarity to influence the allocation of resources undertaken by the CYPTB, in partnership and by each organisation represented.

## **9. Risks and Uncertainties**

If plans and strategies are not clearly aligned there is a risk of duplication and lack of proper accountability.

## **10. Policy and Performance Agenda Implications**

The Children and Young People's Plan should be aligned with other key plans for the local authority and partners:  
Health & Wellbeing Strategy

RMBC Corporate Plan  
RLSCB Business Plan  
Economic Plan

**11. Equality and Diversity**

An Equality Impact Assessment has been completed for the CYPP 2010-2013; the recommendations in this report do not have an impact on the validity of this process.

**12. Background Papers and Consultation**

CYPP 2010-2013

**Contact Name:** Joyce Thacker  
Strategic Director  
Children and Young People's Services  
Rotherham Metropolitan Borough Council  
Telephone: 01709 822677  
Email: [joyce.thacker@rotherham.gov.uk](mailto:joyce.thacker@rotherham.gov.uk)

Jenny Lingrell  
Policy Officer  
Commissioning, Policy & Performance  
Rotherham Metropolitan Borough Council  
Telephone: 01709 254836  
Email: [jenny.lingrell@rotherham.gov.uk](mailto:jenny.lingrell@rotherham.gov.uk)